

# Surface Mount Frequency Mixer

## SKY-53LHR+

Level 10 (LO Power +10 dBm) 2800 to 5300 MHz



CASE STYLE: BJ398

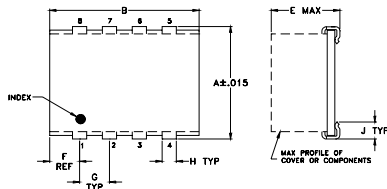
### Maximum Ratings

Operating Temperature	-40°C to 85°C
Storage Temperature	-55°C to 100°C
RF Power	50mW
IF Current	40mA
Permanent damage may occur if any of these limits are exceeded.	

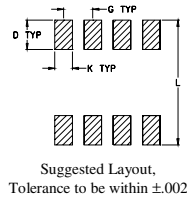
### Pin Connections

LO	5
RF	1
IF	7
GROUND	2,3,4,6,8

### Outline Drawing



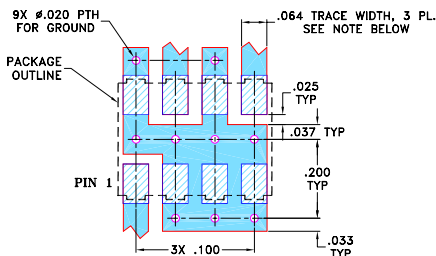
### PCB Land Pattern



### Outline Dimensions (inch)

A	B	C	D	E	F	G
.305	.390	--	.100	.105	.045	.100
7.75	9.91	--	2.54	2.67	1.14	2.54
H	J	K	L	wt		
.047	.065	.065	.325	grams		
1.19	1.65	1.65	8.26	0.20		

### Demo Board MCL P/N: TB-11 Suggested PCB Layout (PL-056)



#### NOTES:

- TRACE WIDTH IS SHOWN FOR ROGERS RO4350B WITH DIELECTRIC THICKNESS .030" ± .002". COPPER: 1/2 OZ. EACH SIDE. FOR OTHER MATERIALS TRACE WIDTH MAY NEED TO BE MODIFIED.
- BOTTOM SIDE OF THE PCB IS CONTINUOUS GROUND PLANE.
  - DENOTES PCB COPPER LAYOUT WITH SMOBC (SOLDER MASK OVER BARE COPPER)
  - DENOTES COPPER LAND PATTERN FREE OF SOLDER MASK

#### Notes

- Performance and quality attributes and conditions not expressly stated in this specification document are intended to be excluded and do not form a part of this specification document.
- Electrical specifications and performance data contained in this specification document are based on Mini-Circuit's applicable established test performance criteria and measurement instructions.
- The parts covered by this specification document are subject to Mini-Circuits standard limited warranty and terms and conditions (collectively, "Standard Terms"); Purchasers of this part are entitled to the rights and benefits contained therein. For a full statement of the Standard Terms and the exclusive rights and remedies thereunder, please visit Mini-Circuits' website at [www.minicircuits.com/MCLStore/terms.jsp](http://www.minicircuits.com/MCLStore/terms.jsp)

### Features

- wide bandwidth, 2800 to 5300 MHz.
- low conversion loss, 5.7 dB typ.
- good L-R isolation, 28 dB typ.
- J-leads for strain relief

### Applications

- line of sight links
- fixed satellite

### Electrical Specifications

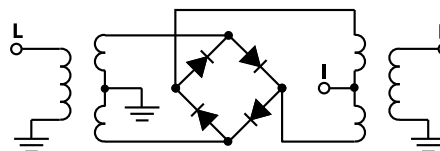
FREQUENCY (MHz)		CONVERSION LOSS (dB)			LO-RF ISOLATION (dB)		LO-IF ISOLATION (dB)		IP3 at center band (dBm)
LO/RF	IF	Mid-Band		Total Range Max.	Typ.		Typ.		Typ.
$f_L - f_U$		$\bar{X}$	$\sigma$		Typ.	Min.	Typ.	Min.	
2800-5300	DC-500	6.2	.20	9.5	28	15	12	8	14

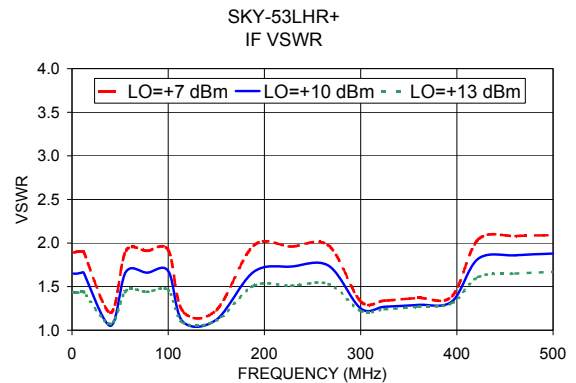
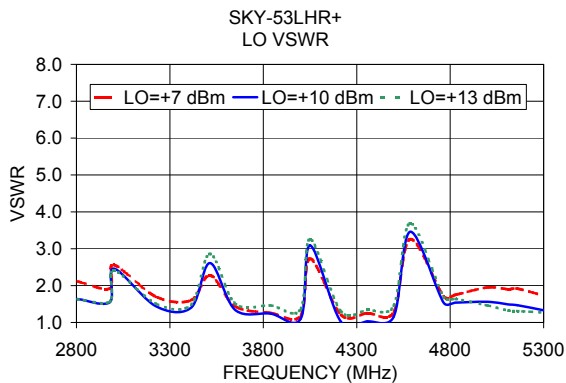
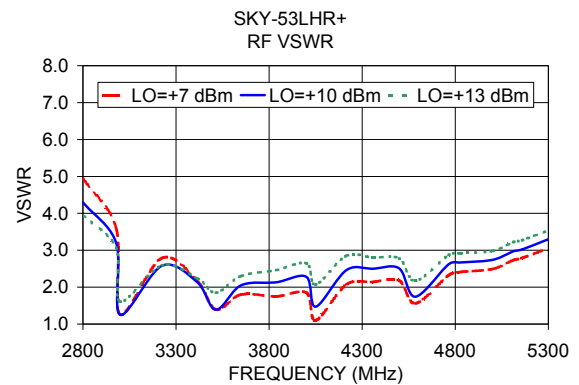
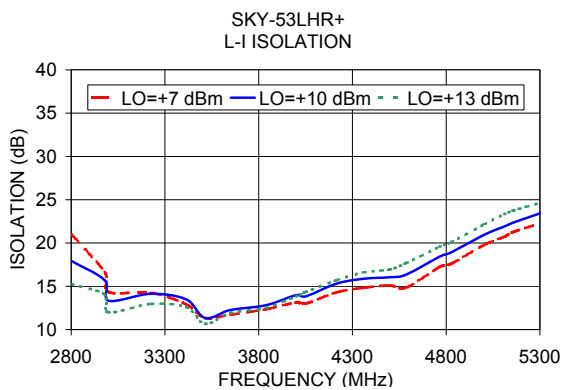
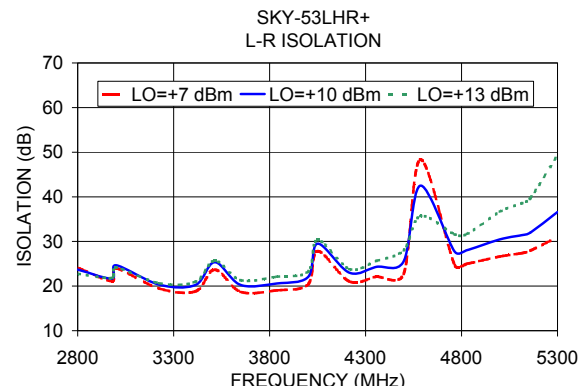
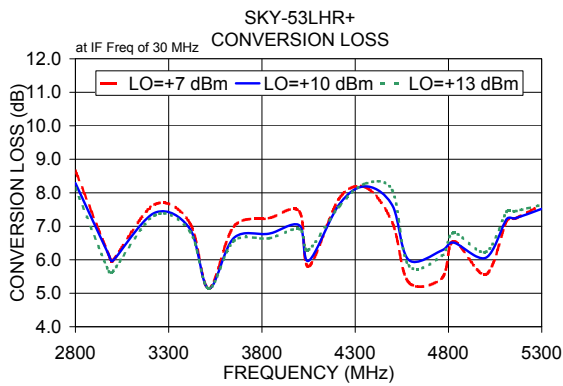
1 dB COMP.: +5 dBm typ.

### Typical Performance Data

Frequency (MHz)		Conversion Loss (dB)	Isolation L-R (dB)	Isolation L-I (dB)	VSWR RF Port (:1)	VSWR LO Port (:1)
RF	LO	LO +10dBm	LO +10dBm	LO +10dBm	LO +10dBm	LO +10dBm
2800.00	2830.00	8.29	23.70	17.95	4.30	1.64
2978.57	3008.57	6.15	21.68	15.70	3.20	1.55
3000.00	3030.00	5.97	24.67	13.33	1.25	2.46
3224.53	3254.53	7.40	20.33	14.13	2.58	1.44
3413.21	3443.21	6.93	20.24	13.49	2.14	1.40
3514.29	3544.29	5.14	23.70	11.33	1.39	2.61
3649.06	3679.06	6.65	20.25	12.26	2.05	1.34
3837.74	3867.74	6.78	20.59	12.81	2.13	1.24
4000.00	4030.00	7.03	22.00	13.98	2.28	1.10
4050.00	4080.00	5.97	29.50	13.83	1.47	3.09
4215.09	4185.09	7.66	23.01	15.30	2.46	1.02
4356.60	4326.60	8.19	24.31	15.86	2.50	1.03
4498.11	4468.11	7.63	25.54	16.04	2.51	1.16
4585.71	4615.71	6.00	42.50	16.34	1.74	3.46
4764.29	4794.29	6.28	27.73	18.42	2.62	1.54
4828.30	4798.30	6.51	28.05	18.93	2.67	1.54
5000.00	5030.00	6.06	30.48	20.92	2.74	1.56
5111.32	5081.32	7.21	31.40	21.92	2.97	1.49
5158.49	5128.49	7.24	31.98	22.36	3.02	1.47
5300.00	5270.00	7.52	36.61	23.42	3.30	1.33

### Electrical Schematic





**Notes**

- A. Performance and quality attributes and conditions not expressly stated in this specification document are intended to be excluded and do not form a part of this specification document.
- B. Electrical specifications and performance data contained in this specification document are based on Mini-Circuit's applicable established test performance criteria and measurement instructions.
- C. The parts covered by this specification document are subject to Mini-Circuits standard limited warranty and terms and conditions (collectively, "Standard Terms"); Purchasers of this part are entitled to the rights and benefits contained therein. For a full statement of the Standard Terms and the exclusive rights and remedies thereunder, please visit Mini-Circuits' website at [www.minicircuits.com/MCLStore/terms.jsp](http://www.minicircuits.com/MCLStore/terms.jsp)

